



SANDOVAL CUSTOM CREATIONS, INC.

US Pat. No. 11,710,319

RAPTOR (Rapid Tactical Operations and Reconnaissance Platform) is designed to be a single-pane-of-glass interface, with a variety of third-party analytics that serves as a force multiplier tool for law enforcement. The suite of analytics RAPTOR supports allows for live video streams to be processed rapidly, on the edge, providing highly accurate, searchable, reportable, alarmable data. Instead of watching days, or even weeks of footage to obtain the information needed for an investigation, RAPTOR gleans the pertinent information from the video, speeding up the investigative process.

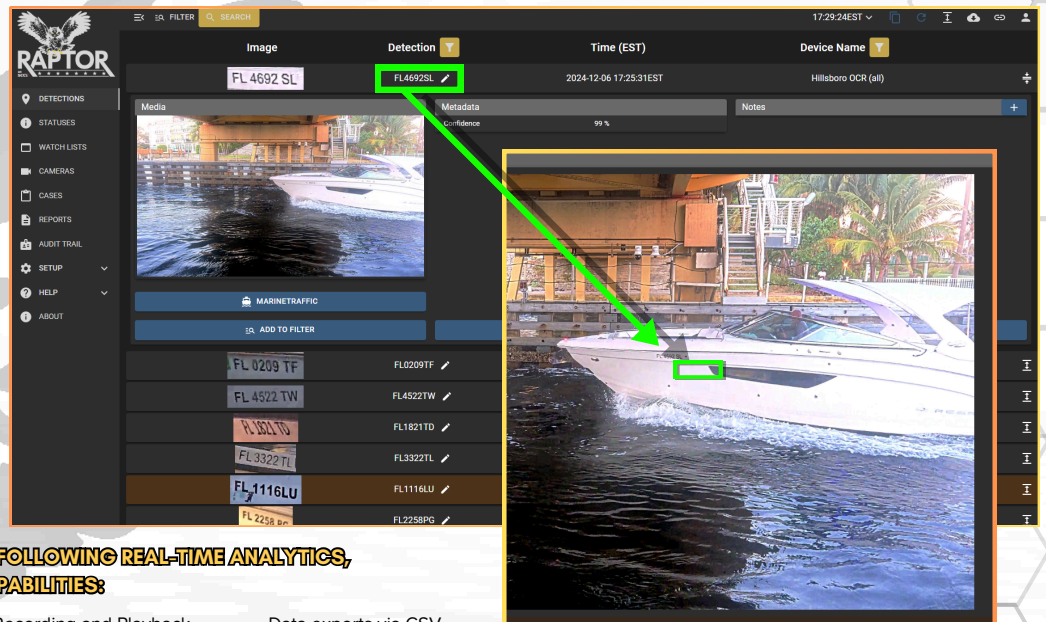
Having already been integrated with several analytic applications, RAPTOR is designed to quickly incorporate with most third-party analytic software developer kits (SDKs). Do you already have an analytic vendor of preference? Talk to an SCCI representative to have a single-pane-of-glass experience or see if RAPTOR already integrates with your vendor of choice.

SCCI RAPTOR is the first of its kind and the future of Smart Pole Camera Systems - as it's constantly being evolved, developed and tested for tomorrow's possibilities.

RAPTOR EMPOWERS HUMANS TO FOCUS ON MAKING INFORMED, DATA-DRIVEN DECISIONS WITH UNMATCHED EFFICIENCY

RAPTOR Features:

-  **Smart Reporting**
-  **Case Management Tools**
-  **External Data Retrieval**
-  **SMS or Email Notifications**
-  **Integrated VMS**
-  **Powerful Search Engine**



THE RAPTOR SOLUTION IS CAPABLE OF THE FOLLOWING REAL-TIME ANALYTICS, FEATURES AND CAPABILITIES:

- Real-time Aircraft Tail Number Detection
- Maritime Ship/Boat Hull Number Detection
- Person Detection
- Vehicle Classification
- License Plate Recognition
- Reports, including shared reports amongst Groups and Divisions
- Video Recording and Playback
- Weapon Detection (*Future*)
- Crowd Behavioral Anomaly Detection (*Future*)
- RAPTOR Edge Manager/Edge Link Management. Seamless and Secure.
- Data exports via CSV and XLS file
- Powerful search and filtering capability
- Audit Trail to allow admins to watch user activity
- Event-based notes to help analysts with investigations
- Tactical edge-based VMS, allowing for flexible video recording, playback and support
- Watch listing for a variety of event-based data, including faces, license plates, objects and data fields information

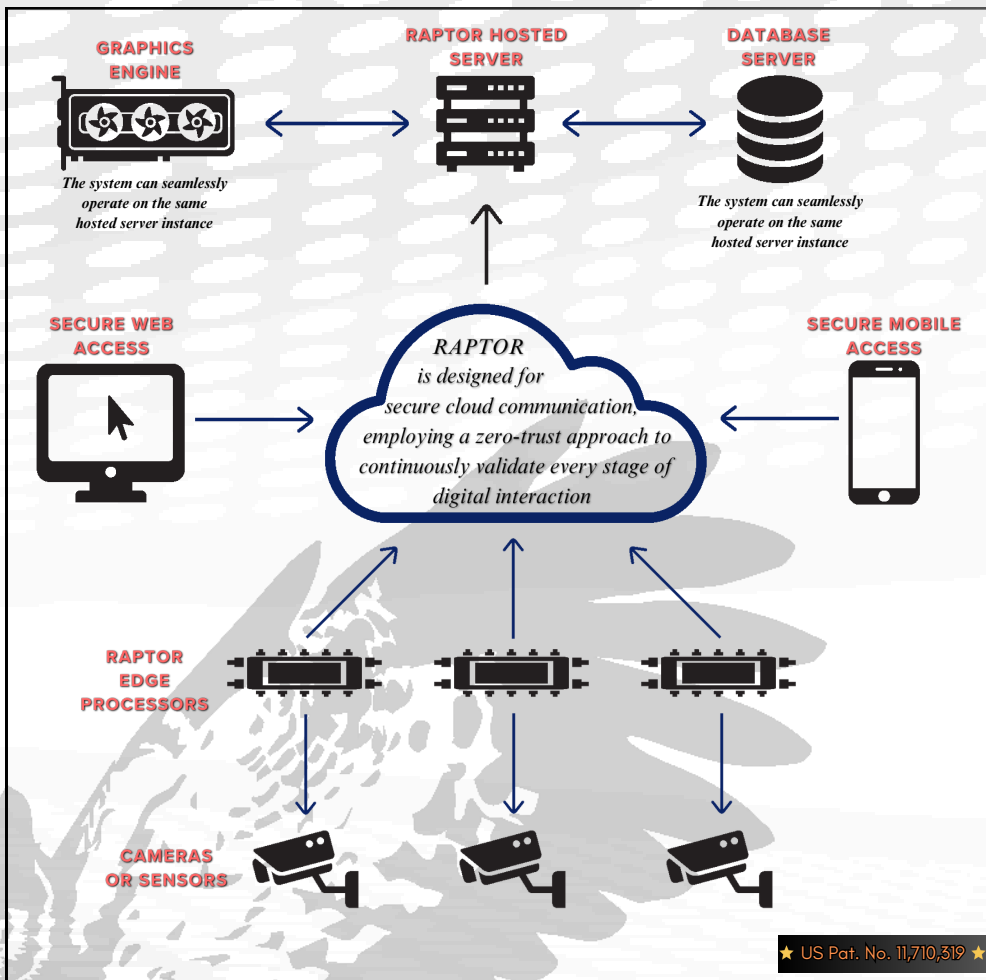
★ **EXPERIENCE RAPTOR IN ACTION - CONTACT SCCI FOR A LIVE DEMONSTRATION!** ★

PLEASE CONTACT: SHAUN ~ 303.918.3878 ~ SHAUN@SCCICOVERT.COM OR CHAD ~ 605.520.2584 ~ CHAD@SCCICOVERT.COM

The RAPTOR license(s) is purchased on 12-month subscription-based model. Additional updates and support are available for purchase at a rate of 30% of the original RAPTOR license price. SCCI will assess your current hardware before selling the latest updated license(s) to ensure it will properly operate on your hardware. In the rapidly evolving software technology world we live in, we do not want to sell you an updated license(s) unless we know it will operate to its fullest potential. The RAPTOR license(s) is purchased with a perpetual thought in mind, meaning if the hardware is still operational, RAPTOR will still function as originally purchased. License(s) and the hardware purchased with the RAPTOR license(s) may become

obsolete, without notice. If you continue to use a product that has exceeded its warranty, hotfixes and patches will no longer be provided. Furthermore, RAPTOR license(s) is purchased by an agency, not an agent. SCCI acknowledges that new users/administrators will need assistance to operate RAPTOR, but please note that licenses that exceed their original 12-month, or purchased additional updated license(s) support and updates duration, will need to be renewed to ensure risks are not being exposed to either party. We encourage regular updates to protect your data from harmful risks, and to offer you the latest capabilities that RAPTOR has to offer. All third-party analytics license(s) renewals are subject to vendors licensing structure.

RAPTOR HIGH-LEVEL SYSTEM ARCHITECTURE:



RAPTOR SYSTEM COMPONENTS

RAPTOR Server

- Securely cloud-hosted by SCCI for seamless performance
- Option for on-premises server(s) to accommodate large-scale or custom deployments

IP Camera Compatibility

- Supports any IP camera capable of delivering an RTSP stream

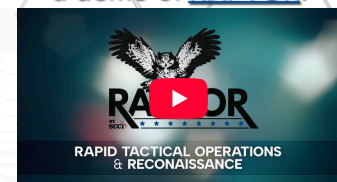
Edge Recording & Analytics

- Powered by purpose-built hardware for efficient edge video recording and advanced analytics processing

Contact [SCCI](#) to see a demo of [RAPTOR](#)!



Scan the QR Code to view RAPTOR Video!



DEDICATED CUSTOMER SUPPORT - YOUR SUCCESS IS OUR PRIORITY

SCCI offers comprehensive edge-based and enterprise-level hardware solutions, supporting both covert and overt operations, including Camera (Axis, Canon, Panasonic), LTE Router (Cradlepoint, Sierra Wireless, PepLink) with advanced cooling and power options. We can also provide software only solutions to existing hardware infrastructure.

